



RICHMOND

INTERNATIONAL AIRPORT

Aircraft Parking Request Procedures

- **All Diversions (leased/non-leased space)**
 - **Scheduled aircraft (non-leased space)**

All inbound diversions must be reported to RIC Airport Operations whether they will be parking at a leased gate, non-leased gate, or hardstand parking spot. The information contained in Appendix E details current airline gate lease status and hardstand parking positions on various ramps.

Airport Operations numbers:

OFFICE (804) 226-8590

DUTY CELL (804) 221-6694

24/7 COMM (804) 226-0001



APPENDIX E – Gate Lease Status and Hardstand Parking Information

RIC LEASED GATES AND RON PARKING – EFFECTIVE 7/1/2021*

1. Based on current configuration / gate analysis – subject to change

Gate Number	Leased to	Hours	Max. Wingspan ¹
A-1			85 ft. (E-175)
A-2	JetBlue	RON 19:00 - 07:00	85 ft. (E-175)
A-3			85 ft. (E-175)
A-4	JetBlue	Continuous	118 ft. (B-737, A-320)
A-5	Breeze	Per use	85 ft. (E-175)
A-6	American	Continuous	118 ft. (B-737, A-320)
A-8	American	Continuous	118 ft. (B-737, A-320)
A-10	American	Continuous	118 ft. (B-737, A-320)
A-11			118 ft. (B-737, A-320)
A-12	American	Continuous	118 ft. (B-737, A-320)
A-13			118 ft. (B-737, A-320)
A-14	American	Continuous	118 ft. (B-737, A-320)
A-15	jetBlue	RON 22:00 – 10:00 (effective 9/1)	125 ft. (B-757)
A-16			200 ft. (B-777)
Gate Number	Leased to	Hours	Max. Wingspan ¹
B-1	United	Continuous	118 ft. (B-737, A-320)
B-2	United	RON 19:00 - 07:00	85 ft. (E-175)
B-3	United	Continuous	118 ft. (B-737, A-320)
B-4	United	Continuous	118 ft. (B-737, A-320)
B-5	Allegiant	Per use	118 ft. (B-737, A-320)
B-6	Delta	RON 19:00 - 07:00	118 ft. (B-737, A-320)
B-7	Spirit	Continuous	118 ft. (B-737, A-320)
B-9	Southwest	Continuous	118 ft. (B-737, A-320)
B-10	Delta	Continuous	118 ft. (B-737, A-320)
B-11	Delta	RON 19:00 - 07:00	125 ft. (B-757)
B-12	Delta	Continuous	118 ft. (B-737, A-320)
B-13	Delta	RON 19:00 - 07:00	118 ft. (B-737, A-320)
B-14	Delta	Continuous	125 ft. (B-757)
B-15	Delta	RON 19:00 - 07:00 (effective 9/14)	212 ft. (B-747)

APPENDIX E

AIR CARRIER RAMP PARKING - SEE FIGURE 1

SPOT	AIRCRAFT GROUP SIZE	SPECIAL NOTES
D5	Group III: 118 ft.	May accommodate two small regional jets parked nose to tail.

CARGO RAMP PARKING – SEE FIGURE 2 & 3

SPOT	AIRCRAFT GROUP SIZE	SPECIAL NOTES
C1	N/A	FEDEX GSE LEASE
C2	N/A	FEDEX GSE LEASE
C3	N/A	Pavement not suitable for aircraft operations.
C4		Size unknown due to ramp realignment
C5	Group III: 118 ft.	SUNCOUNTRY LEASE HOLD
C6		Size unknown due to ramp realignment
C7		Size unknown due to ramp realignment
C8	Group IV: 171 ft.	SUNCOUNTRY LEASE HOLD
C9	Group IV: 171 ft.	FEDEX LEASE HOLD
C10	Group IV: 171 ft.	FEDEX LEASE HOLD
C11	Group III: 118 ft.	FEDEX LEASE HOLD
C12	Group IV: 171 ft.	UPS LEASE HOLD
C13	Group IV: 171 ft.	UPS LEASE HOLD
C14	Group IV: 171 ft.	UPS LEASE HOLD

GREEN highlights indicate possible use for irregular ops (check for conditions)

*indicates May support larger aircraft if adjacent spots vacant

EAST RAMP PARKING – SEE FIGURE 4

SPOT	AIRCRAFT GROUP SIZE	SPECIAL NOTES
1	Group IV: 171 ft.	DHL LEASE HOLD
	Group V: 214 ft.	No markings on ramp

APPENDIX E

FIGURE 1 – NORTH AIR CARRIER RAMP

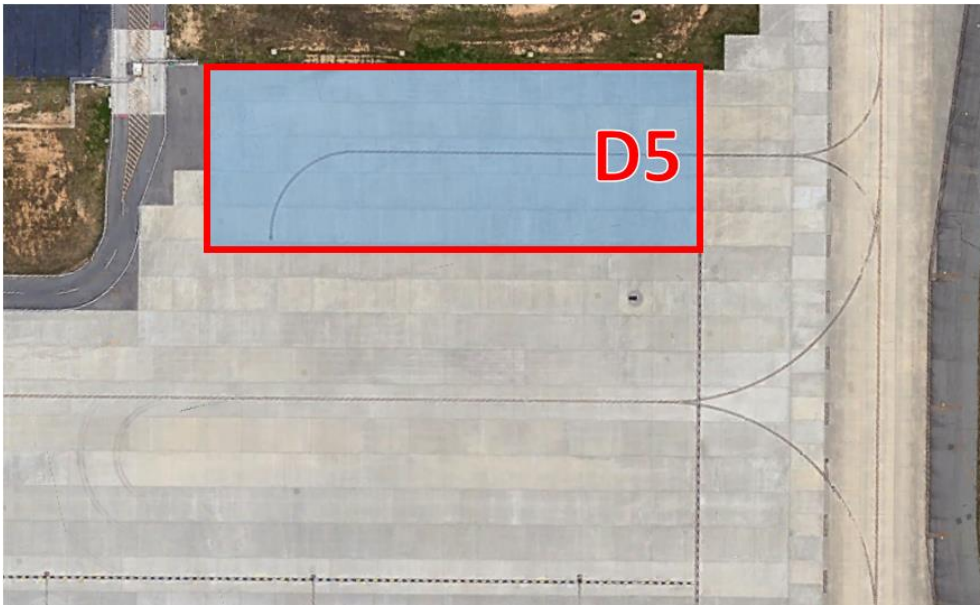
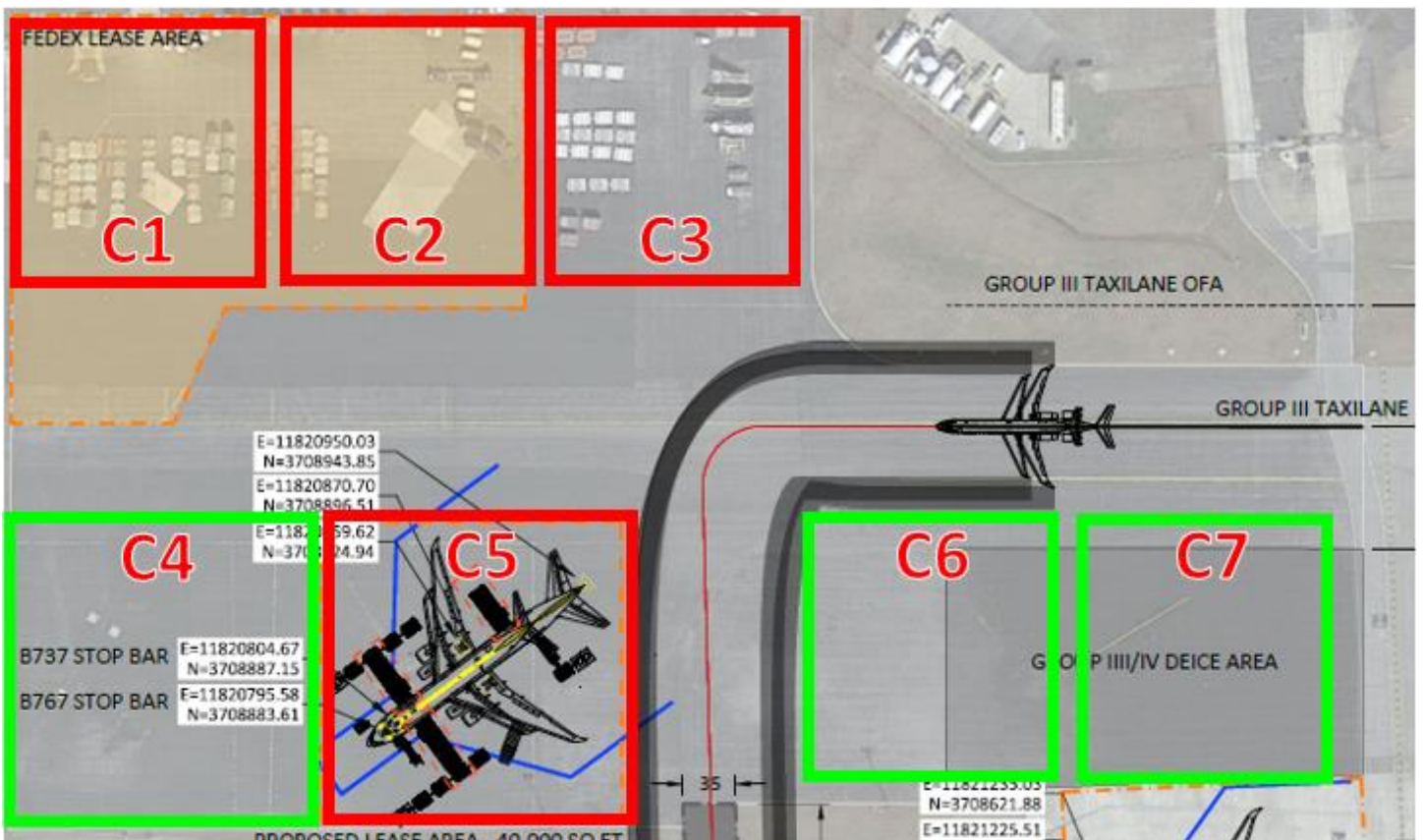
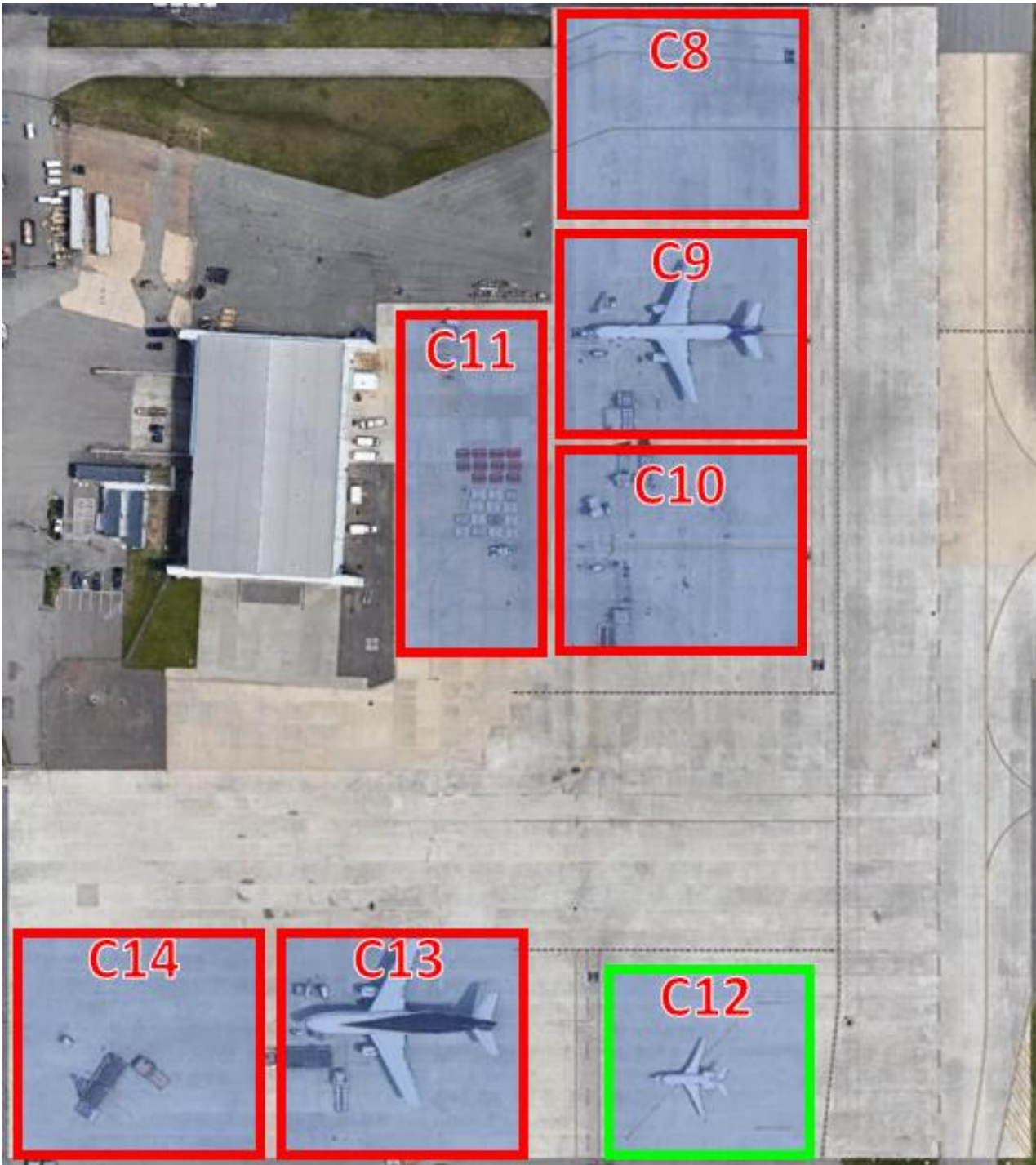


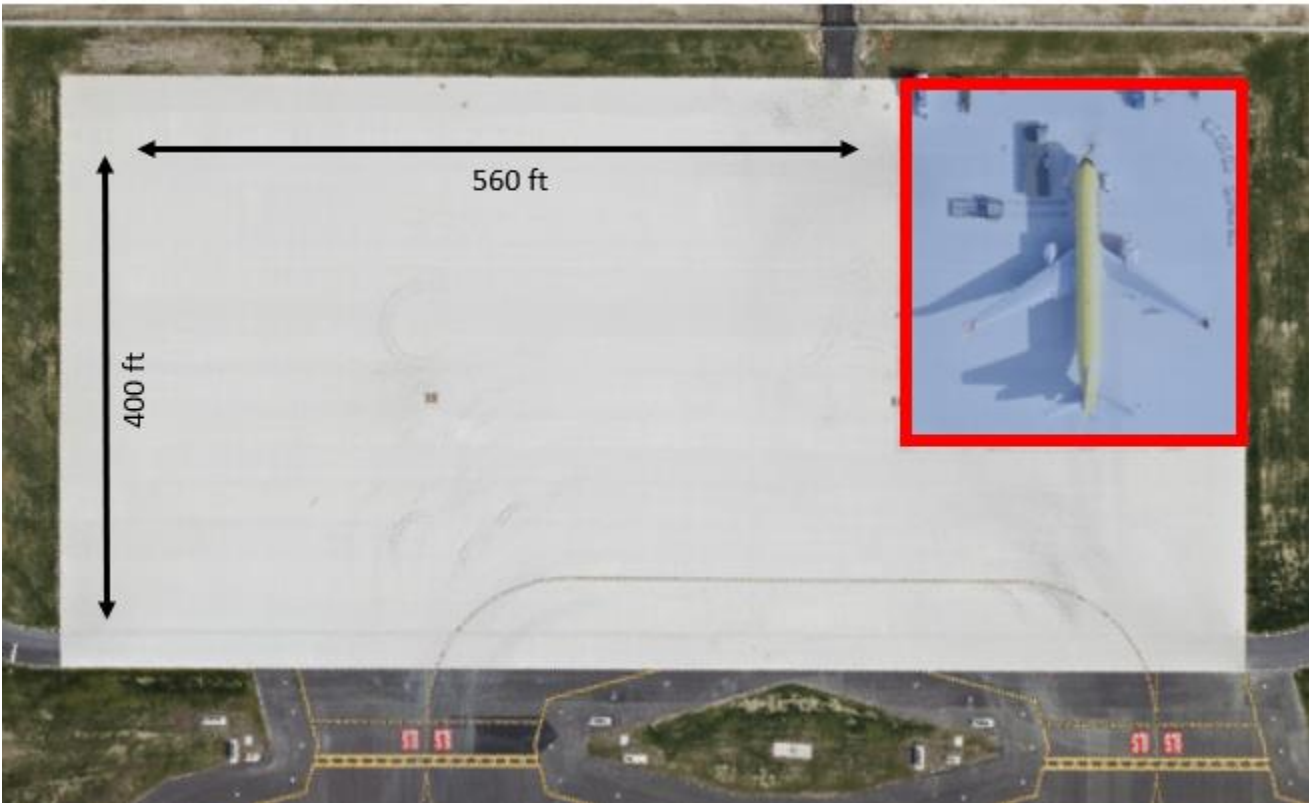
FIGURE 2 – NORTH CARGO RAMP



APPENDIX E
FIGURE 3 – SOUTH CARGO RAMP



APPENDIX E
FIGURE 4 – EAST RAMP #1



20086

AIRPORT DIAGRAM

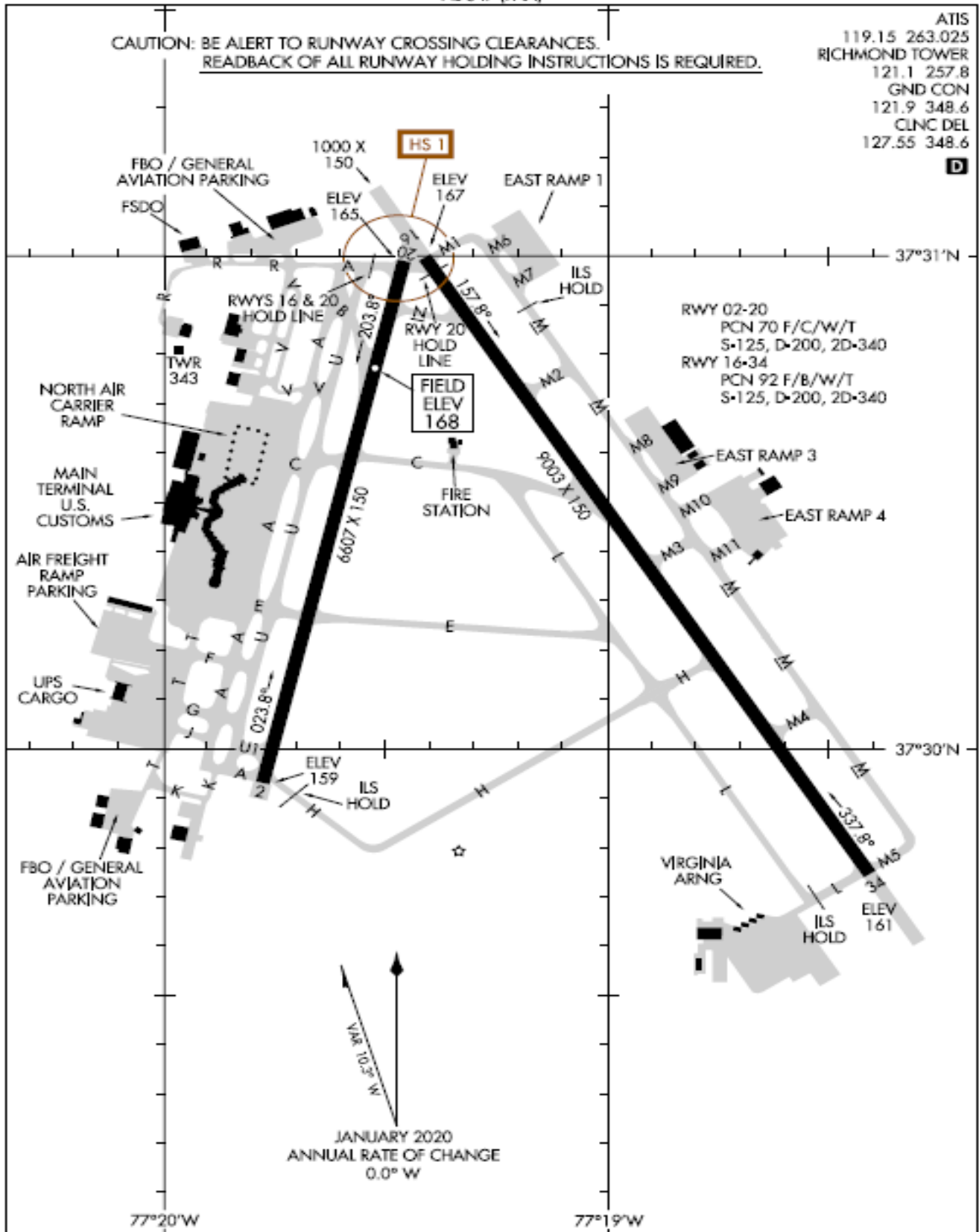
AL-347 (FAA)

RICHMOND INTL (RIC)
RICHMOND, VIRGINIA

CAUTION: BE ALERT TO RUNWAY CROSSING CLEARANCES.
READBACK OF ALL RUNWAY HOLDING INSTRUCTIONS IS REQUIRED.

ATIS	119.15	263.025
RICHMOND TOWER	121.1	257.8
GND CON	121.9	348.6
CLNC DEL	127.55	348.6

D



NE-3, 25 MAR 2021 to 22 APR 2021

NE-3, 25 MAR 2021 to 22 APR 2021

AIRPORT DIAGRAM

20086

RICHMOND, VIRGINIA
RICHMOND INTL (RIC)