

Appendix E – Gate Lease Status and Hardstand Parking Information

RIC LEASED GATES AND RON PARKING – UPDATED 10-8-19*

<u>A CONCOURSE</u>				
Gate Number	Leased to	Hours	Max. Wingspan ¹	Typical user
A-1	American	Continuous ⁴	Group IV: 171 ft.	CRJ7 (76ft.)
A-2	JetBlue	Continuous	Group III: 118 ft.	E190 (94ft.)
A-3	American	Continuous	Group III: 118 ft.	CRJ7 (76ft.)
A-4	JetBlue	Continuous	Group III: 118 ft.	A320 (118ft.)
A-5	American	Continuous	Group III: 118 ft.	E175 (85ft.)
A-6	American	Continuous	Group IV: 171 ft.	B737 (118ft.)
A-7	American	Continuous	Group III: 118 ft.	CRJ9 (82ft.)
A-8	American	Continuous	Group IV: 171 ft.	A320 (118ft.)
<u>B CONCOURSE</u>				
Gate Number	Leased to	Hours	Max. Wingspan ¹	
B-1	United	Continuous	Group IV: 171 ft.	E145 (66ft.)
B-2	United	RON 19:00 - 07:00	Group III: 118 ft.	E135 (66ft.)
B-3	United	Continuous	Group IV: 171 ft.	A320 (118ft.)
B-4	United	Continuous	Group IV: 171 ft.	E175 (85ft.)
B-5	Allegiant	Per use, varies	Group III: 118 ft.	A320 (118ft.)
	Delta	RON 19:00 - 07:00		CRJ7 (76ft.)
B-6	Delta	RON 19:00 - 07:00	Group III: 118 ft.	CRJ2 (70ft.)
B-7	Spirit	Continuous	Group III: 118 ft.	A319 (118ft.)
	United	RON 19:00 - 07:00		
B-9	Southwest	Continuous	Group III: 118 ft.	B737 (118ft.)
B-10	Delta	Continuous	Group IV: 171 ft.	CRJ7 (76ft.)
B-11	Delta	RON 19:00 - 07:00	Group III: 118 ft.	B737 (118ft.)
B-12	Delta	Continuous	Group III: 118 ft.	CRJ7 (76ft.)
B-13	Delta	Continuous	Group IV: 171 ft.	MD88 (108ft.)
B-14	Delta	Continuous	Group IV: 171 ft. ²	B757 (125ft.)
B-15	CRAC		Group V: 214 ft. ³	B777 (200ft.)
	Delta	HS 19:00-07:00		

***Subject to change.**

1. Some gates may accommodate larger aircraft if adjacent gates are unoccupied.
2. Only when aircraft is parked in a North/South configuration. (B14A)
3. Only when adjacent gates are occupied by Group III or smaller. Otherwise, assume Group IV.
4. Special condition for construction.
5. Hard Stand only if available

APPENDIX E

AIR CARRIER RAMP PARKING - SEE FIGURE 1

SPOT	AIRCRAFT GROUP SIZE	SPECIAL NOTES
D5	Group III: 118 ft.	May accommodate two small regional jets parked nose to tail.

CARGO RAMP PARKING – SEE FIGURE 2 & 3

SPOT	AIRCRAFT GROUP SIZE	SPECIAL NOTES
C1	N/A	FEDEX GSE LEASE
C2	N/A	FEDEX GSE LEASE
C3	N/A	Pavement not suitable for aircraft operations.
C4		Size unknown due to ramp realignment
C5	Group III: 118 ft.	SUNCOUNTRY LEASE HOLD
C6		Size unknown due to ramp realignment
C7		Size unknown due to ramp realignment
C8	Group IV: 171 ft.	SUNCOUNTRY LEASE HOLD
C9	Group IV: 171 ft.	FEDEX LEASE HOLD
C10	Group IV: 171 ft.	FEDEX LEASE HOLD
C11	Group III: 118 ft.	FEDEX LEASE HOLD
C12	Group IV: 171 ft.	UPS LEASE HOLD
C13	Group IV: 171 ft.	UPS LEASE HOLD
C14	Group IV: 171 ft.	UPS LEASE HOLD

GREEN highlights indicate possible use for irregular ops (check for conditions)

*indicates May support larger aircraft if adjacent spots vacant

APPENDIX E

FIGURE 1 – NORTH AIR CARRIER RAMP

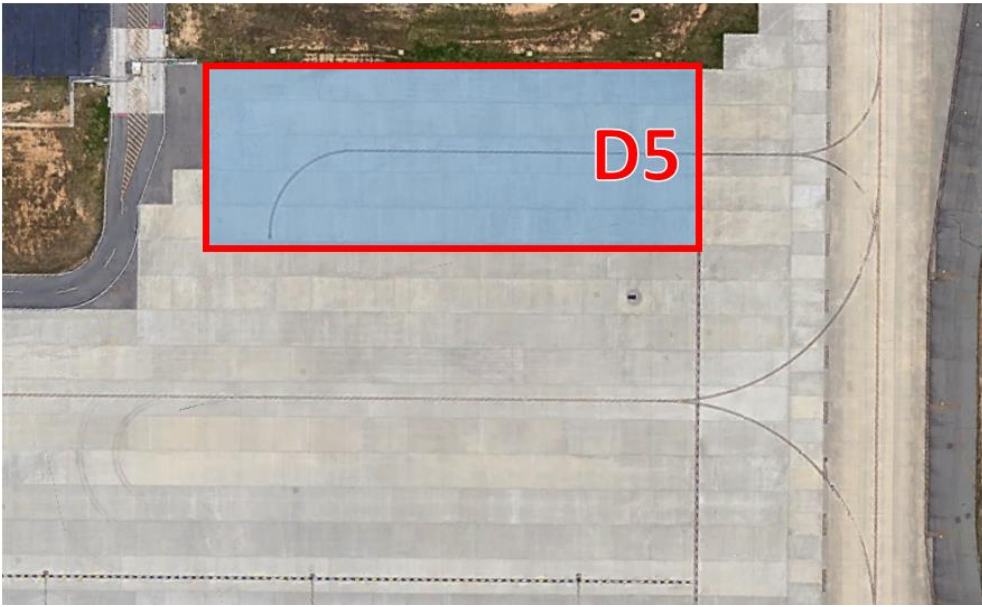
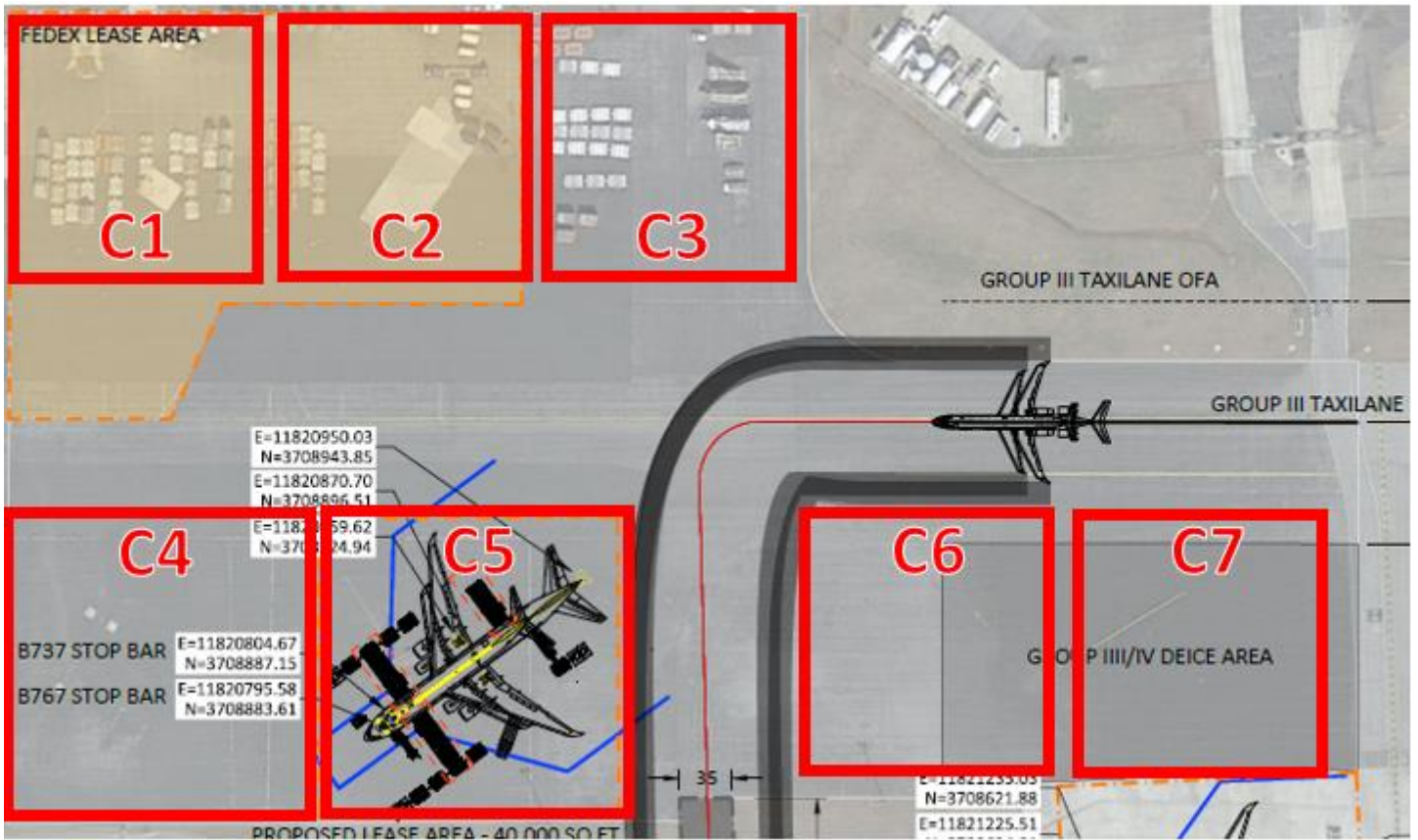


FIGURE 2 – NORTH CARGO RAMP



APPENDIX E
FIGURE 3 – SOUTH CARGO RAMP

